

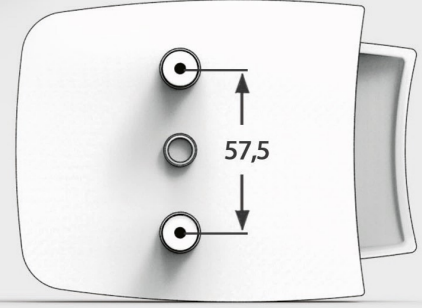
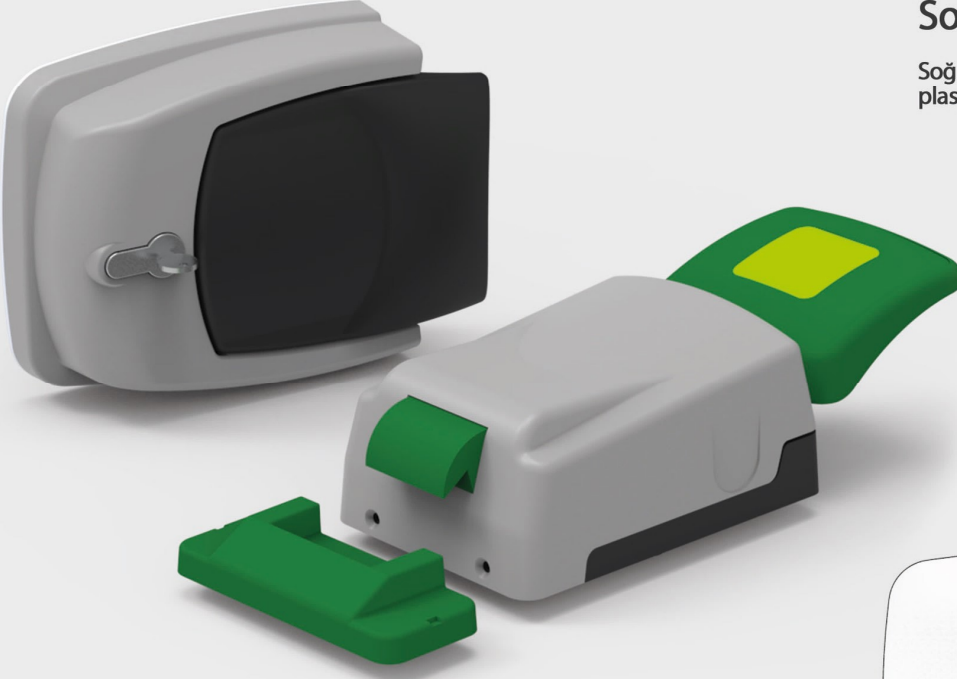
SOĐUTMA SİSTEMLERİ

2024 Sođutma Katalođu

www.omgsogutma.com.tr

Soğukoda Çarpma Kapı Kilidi

Soğukodalarda Kullanılan Isı Yalıtımlı Kapılar için plastik kilit.



Çalışma Sıcaklığı
+50 / -20



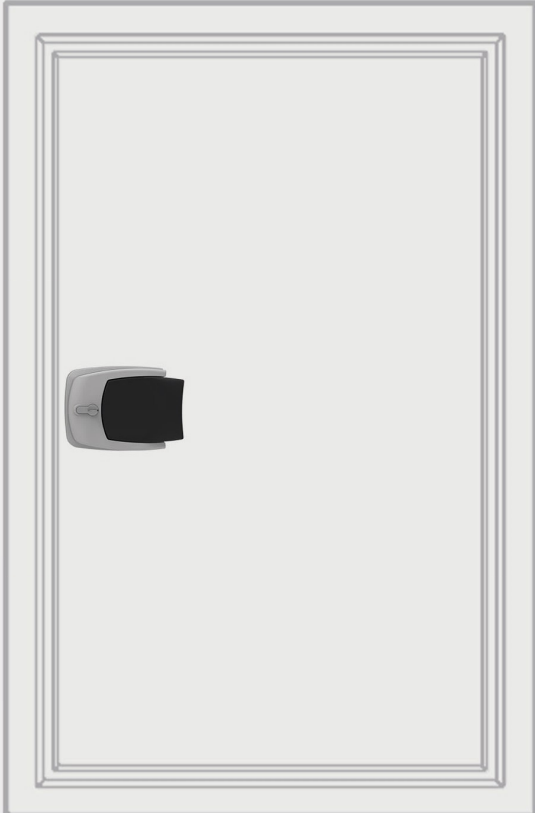
Materyal
GF-PA %30



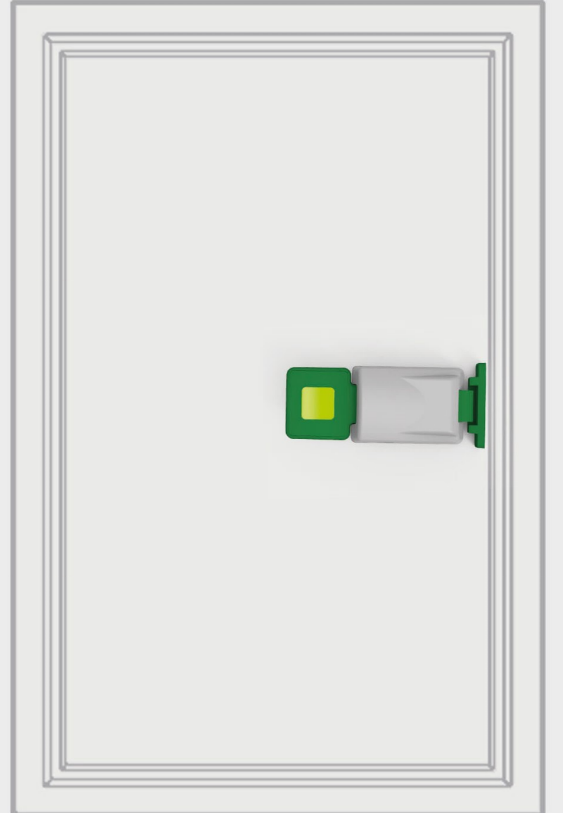
Kapı Ölçüleri
8-10-12-15 CM



İNTELLECTUAL PROPERTY
PATENTED
İNTELLECTUAL PROPERTY



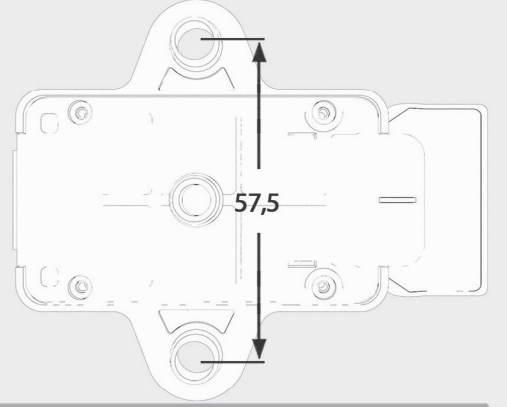
Önden Görünüm



Odanın İçinden Görünüm

Soğukoda Çarpma Kapı Kiliti

Soğukodalarda kullanılan ısı yalıtımlı kapılar için plastik kilit.



Çalışma Sıcaklığı
+50 / -20



Materyal
GF-PA %30



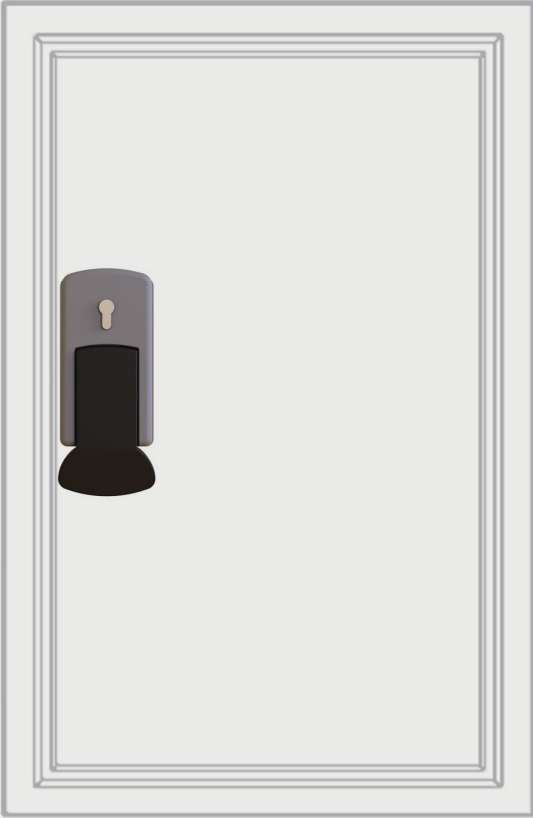
Kapı Ölçüleri
8-10-12-15 CM



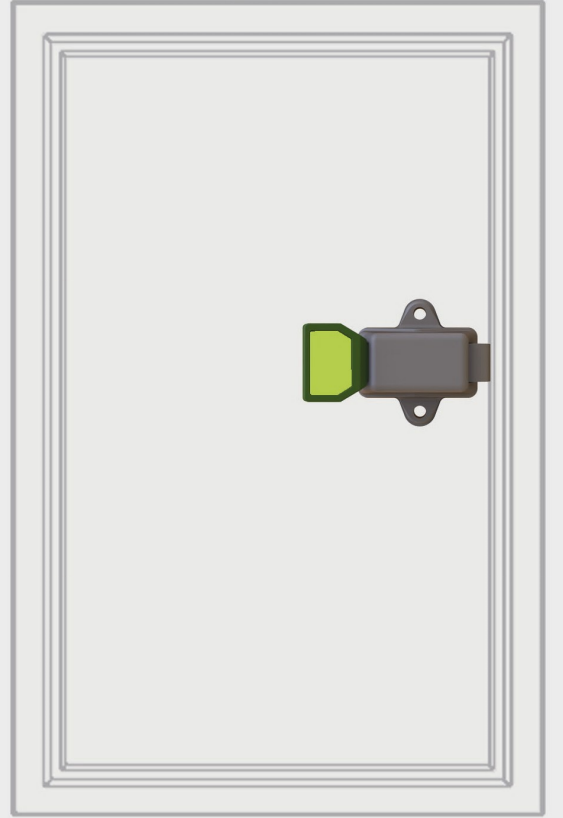
INTELLECTUAL PROPERTY
PATENTED
INTELLECTUAL PROPERTY



International Organization for Standardization
ISO
9001



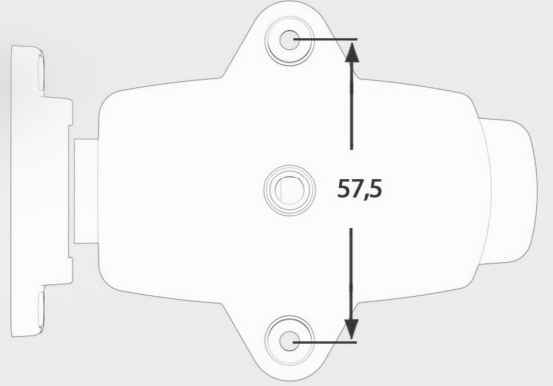
Önden Görünüm



Odanın İçinden Görünüm

Soğukoda Çarpma Kapı Kildi

Soğukodalarda Kullanılan Isı Yalıtımlı Kapılar için plastik kilit.



Çalışma Sıcaklığı
+50 / -20



Materyal
GF-PA %30



Kapı Ölçüleri
8-10-12-15 CM



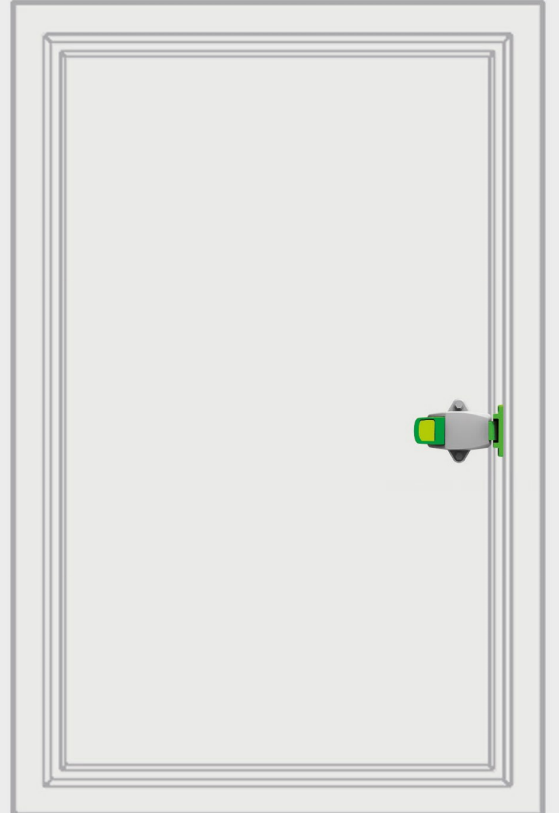
PATENTED
INTELLECTUAL PROPERTY



9001

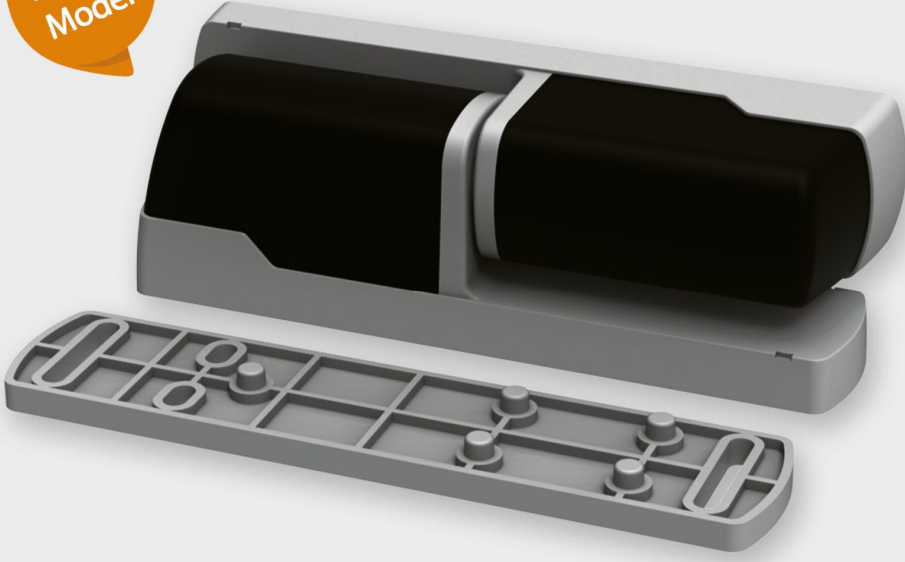


Önden Görünüm



Odanın İçinden Görünüm

Büyük
Model



Soğukoda Çarpma Kapı Mentşesi

Soğukodalarda Kullanılan Isı Yalıtımlı Kapılar için Yükseltmeli Plastik Mentşe.



Çalışma Sıcaklığı
+50 / -20



Materyal
GF-PA %30



Kapı Ölçüleri
8-10-12-15 CM



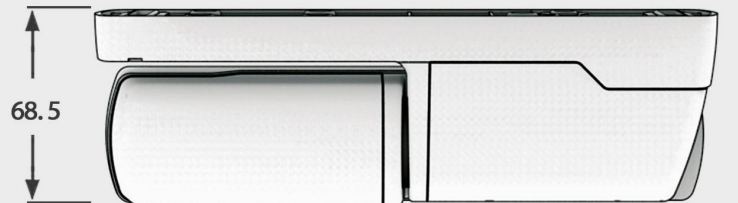
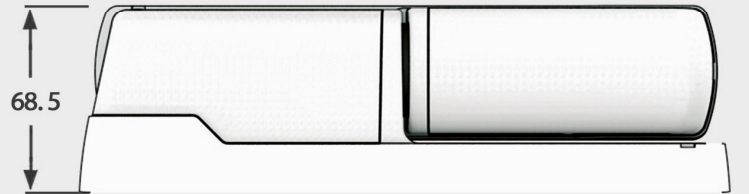
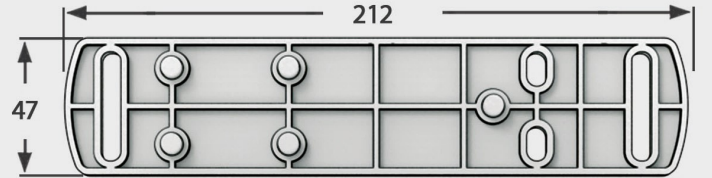
PATENTED
INTELLECTUAL PROPERTY



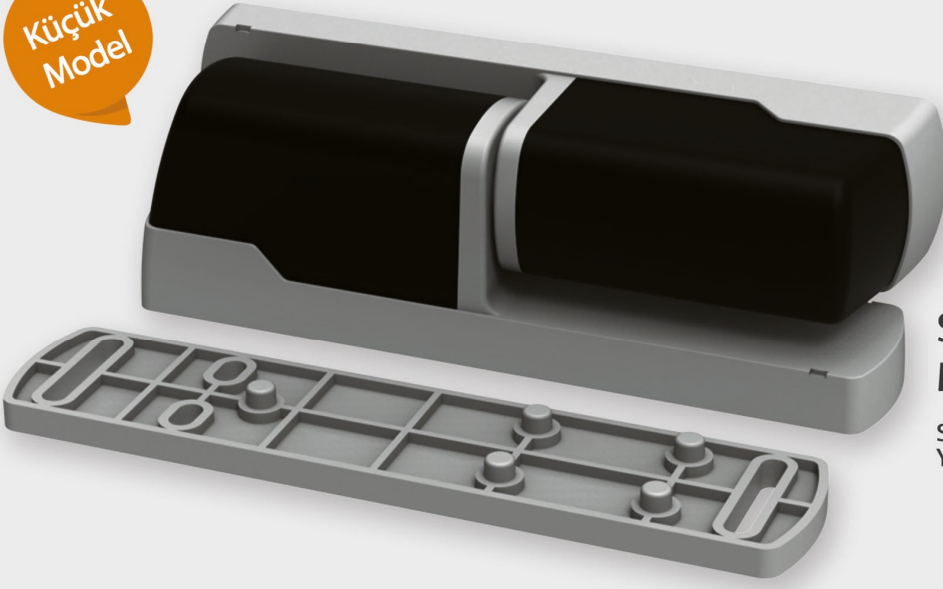
International Organization for Standardization
ISO
9001



Görünüm



Küçük
Model



Soğukoda Çarpma Kapı Menteşesi

Soğukodalarda Kullanılan Isı Yalıtımlı Kapılar için Yükseltmeli Plastik Menteşe.



Çalışma Sıcaklığı
+50 / -20



Materyal
GF-PA %30



Kapı Ölçüleri
8-10-12-15 CM



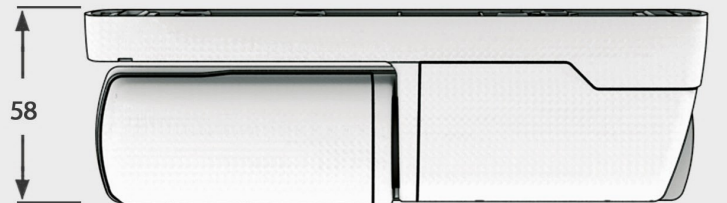
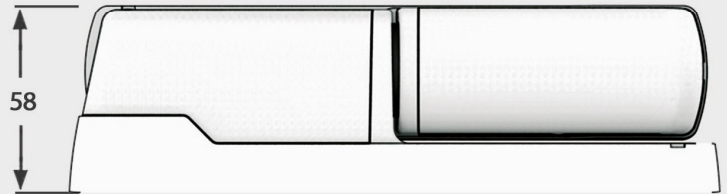
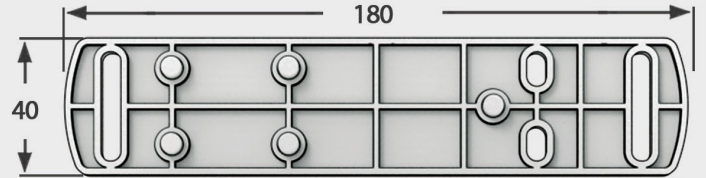
PATENTED
INTELLECTUAL PROPERTY



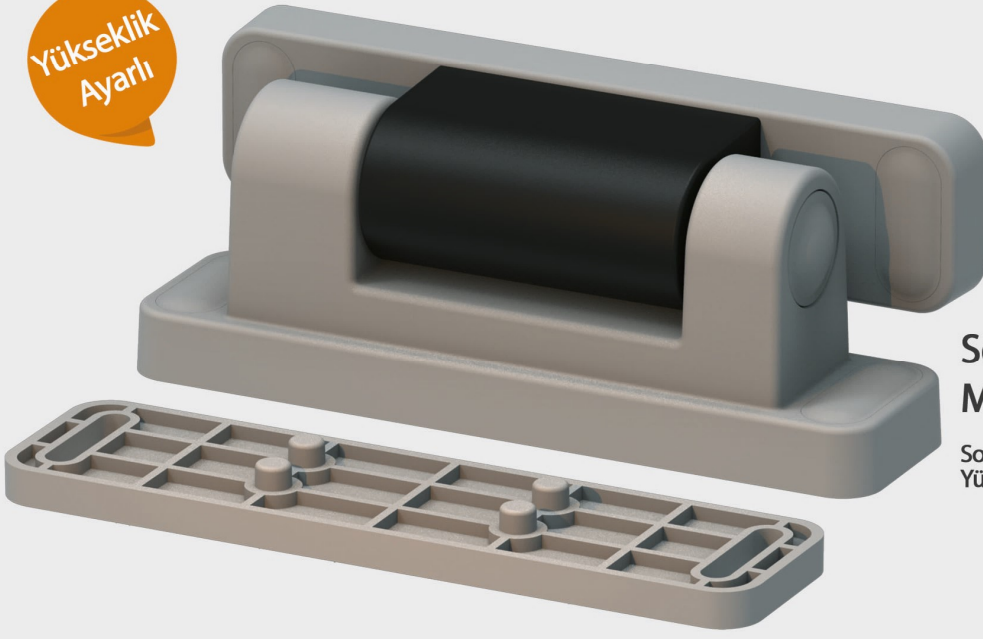
International Organization for Standardization
ISO
9001



Görünüm



Yükseklik
Ayarlı



Soğukoda Çarpma Kapı Menteşesi

Soğukodalarda Kullanılan Isı Yalıtımlı Kapılar için Yükseltmeli Plastik Menteşe.



Çalışma Sıcaklığı
+50 / -20



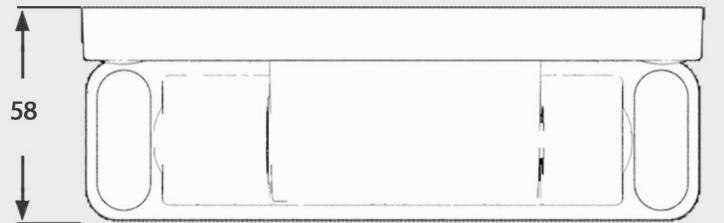
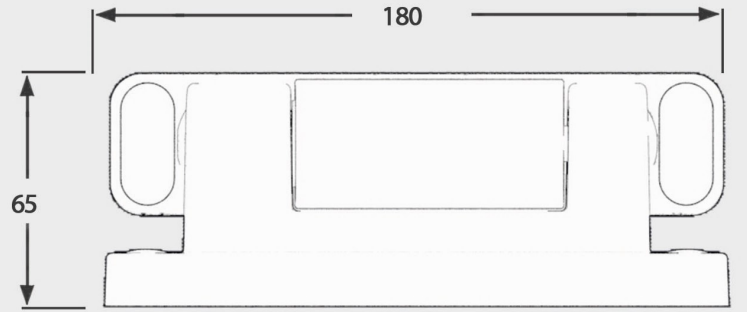
Materyal
GF-PA %30

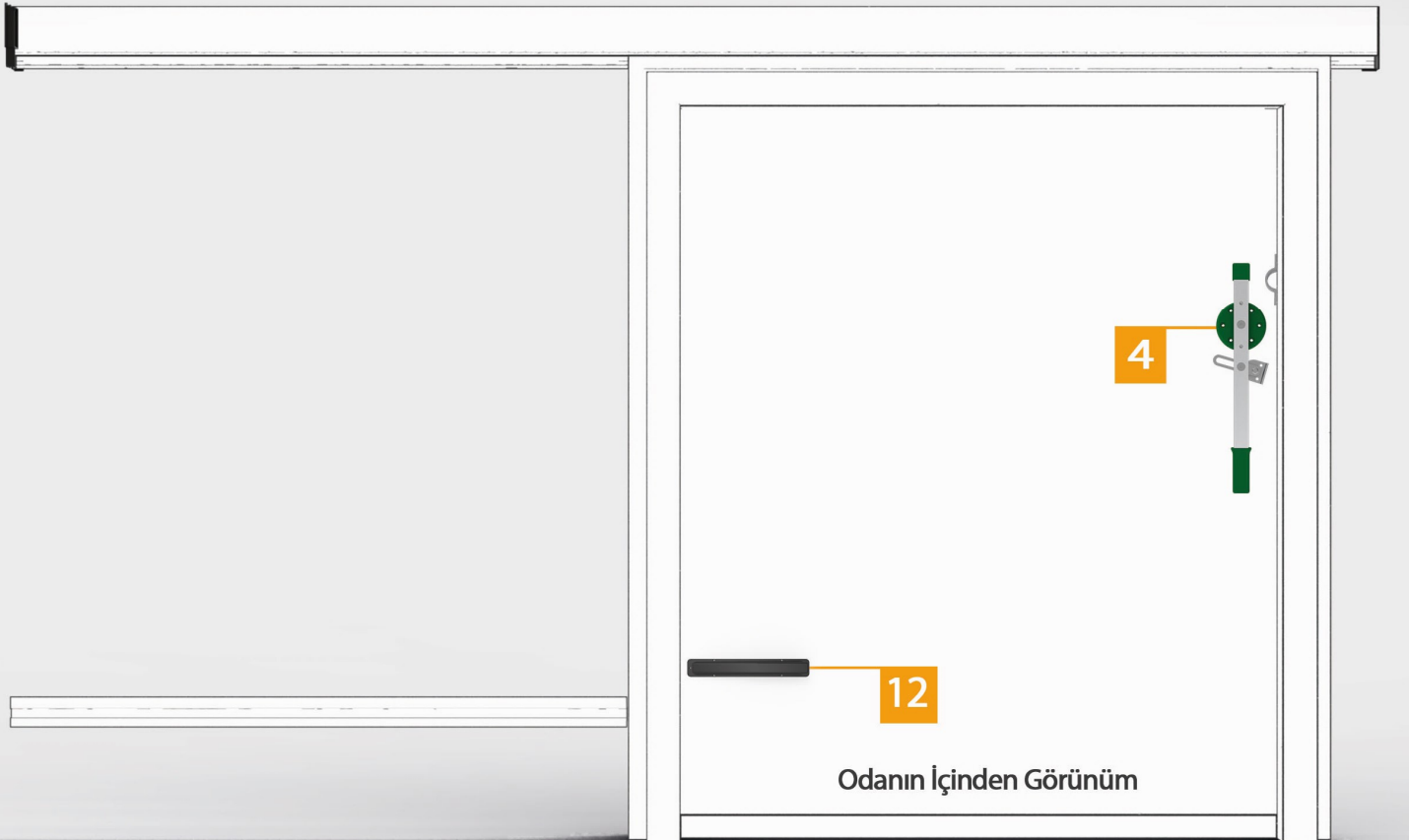
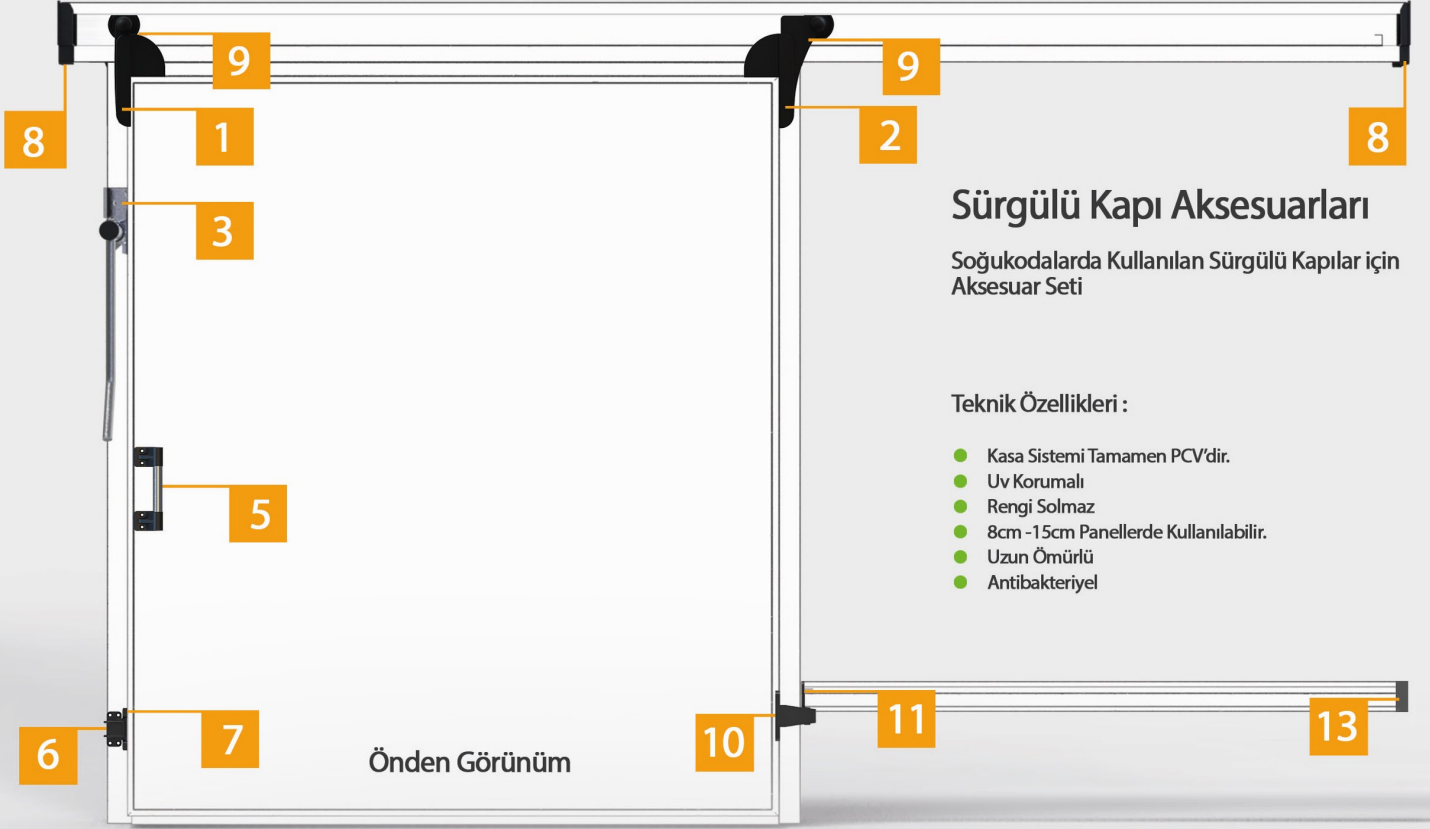


Kapı Ölçüleri
8-10-12-15 CM



Görünüm







1 OMG - S4010
Ön Tekerlek Grubu



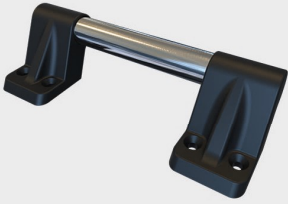
2 OMG - S4011
Arka Tekerlek Grubu



3 OMG - S4012
Dış Açma Kolu



4 OMG - S4013
İç Açma Kolu



5 OMG - S4014
Tutma Kolu



6 OMG - S4015
Sıkıştırma Parçası



7 OMG - S4016
Sıkıştırma Parçası



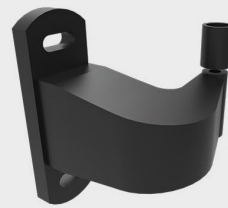
8 OMG - S4017
Yan Kapaklar (Sağ-Sol)



9 OMG - S4018
Yönlendirici (SAĞ)



9 OMG - S4019
Yönlendirici (SOL)



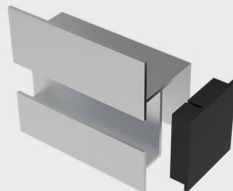
10 OMG - S4020
Kuyruk Makarası



11 OMG - S4021
Kuyruk Çatalı



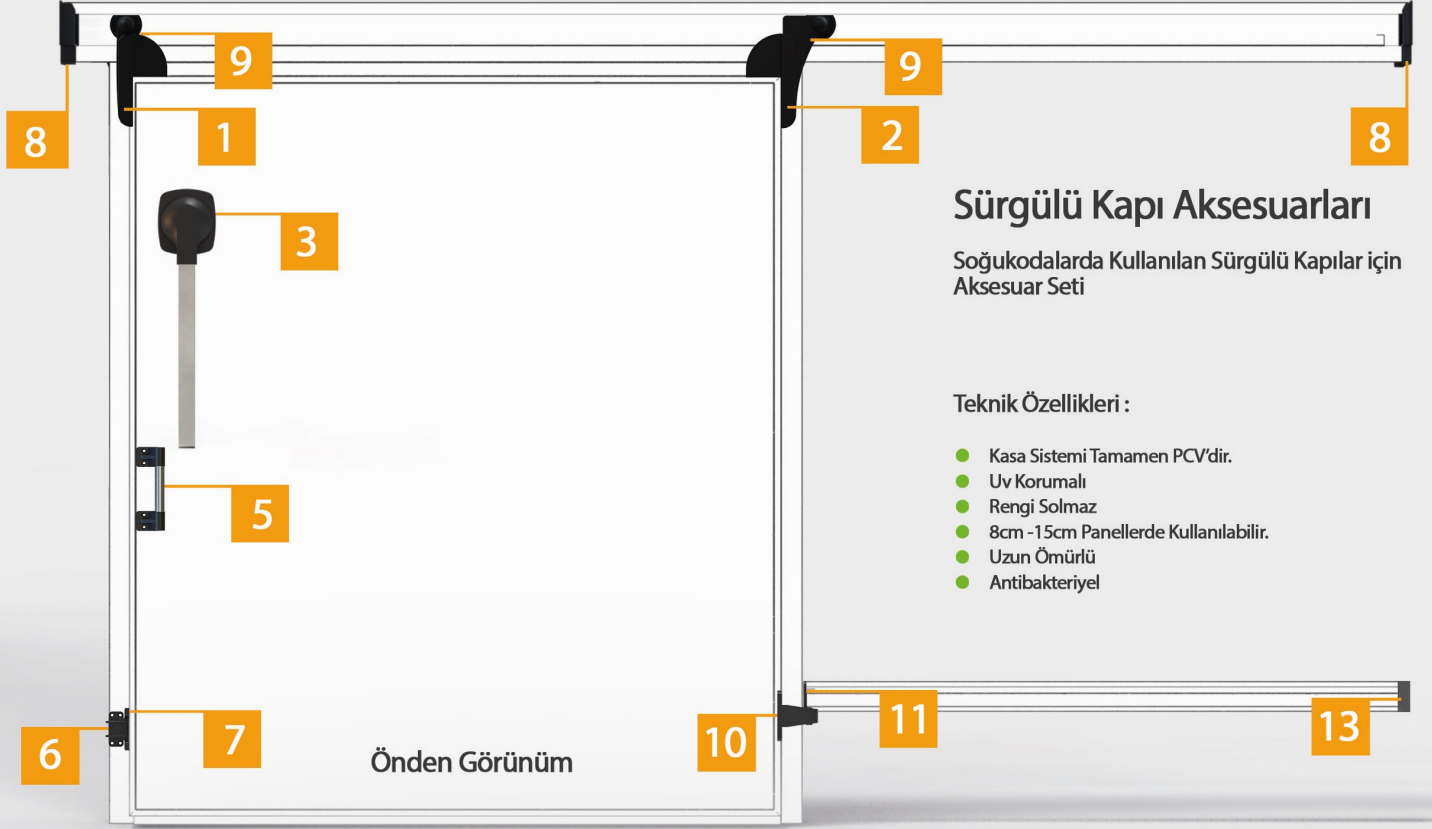
12 OMG - S4022
Kanat Atlama

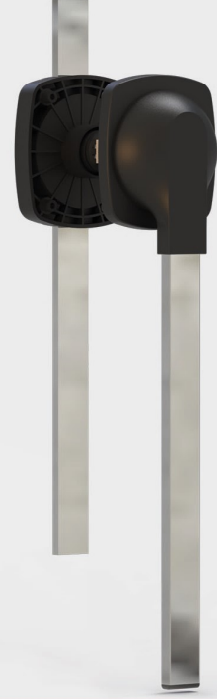
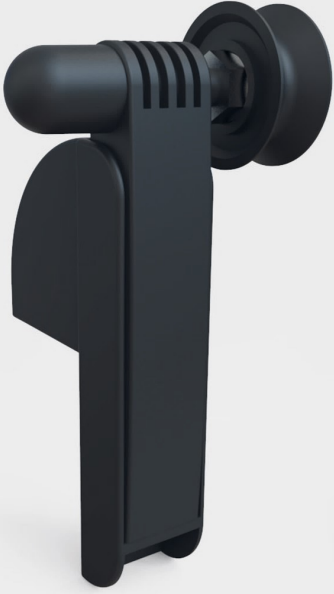


13 OMG - S4023
Kuyruk Profil Kapağı



OMG - S4024
Kesilebilir Rezistans 30 Watt /220 Volt

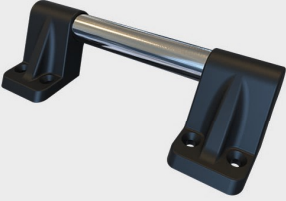




1 OMG - S4010
Ön Tekerlek Grubu

2 OMG - S4011
Arka Tekerlek Grubu

3 OMG - S5012
Dış Açma Kolu

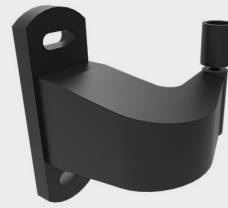


5 OMG - S4014
Tutma Kolu

6 OMG - S4015
Sıkıştırma Parçası

7 OMG - S4016
Sıkıştırma Parçası

8 OMG - S4017
Yan Kapaklar (Sağ-Sol)

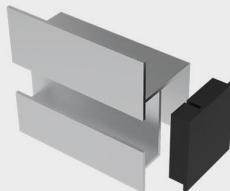


9 OMG - S4018
Yönlendirici (SAĞ)

9 OMG - S4019
Yönlendirici (SOL)

10 OMG - S4020
Kuyruk Makarası

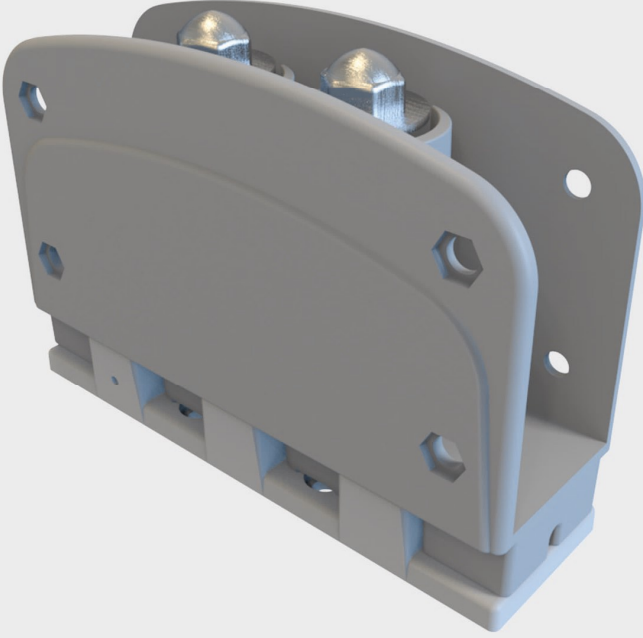
11 OMG - S4021
Kuyruk Çatalı



12 OMG - S4022
Kanat Atlama

13 OMG - S4023
Kuyruk Profil Kapağı

OMG - S4024
Kesilebilir Rezistans 30 Watt /220 Volt



Servis Kapısı Mentşesi

Soğukodalarda ve Endüstriyel Mutfaklarda Bölümler Arası Geçişlerde Kullanılan Kapı Mentşesi



Çalışma Sıcaklığı
+50 / -20



Materyal
GF-PA %30



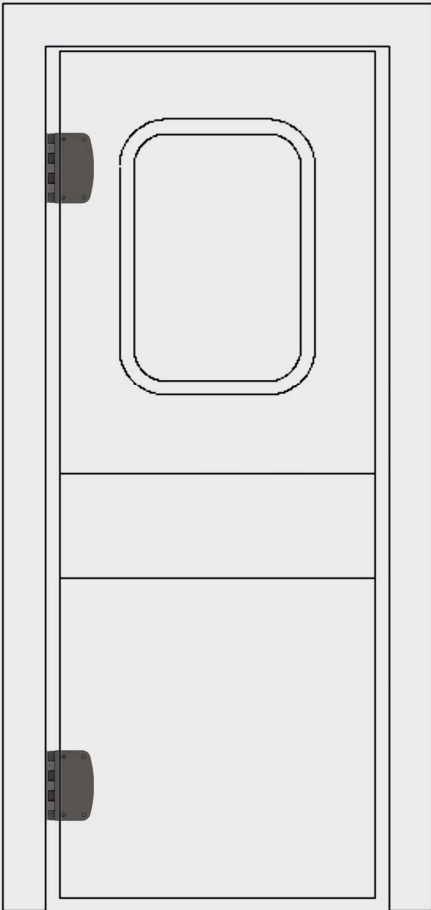
Kapı Ölçüleri
4 CM



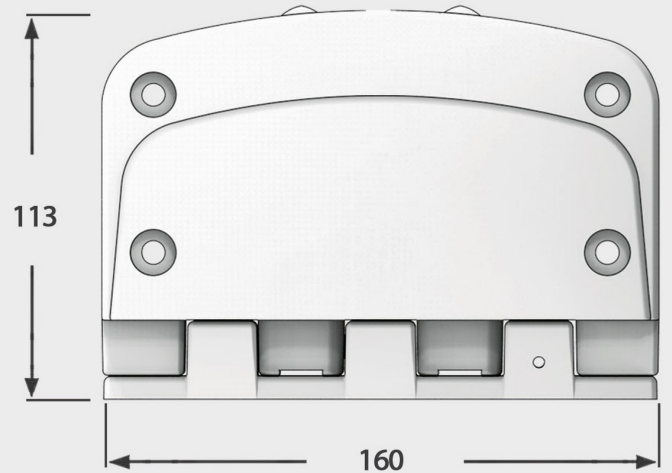
Patent Numarası

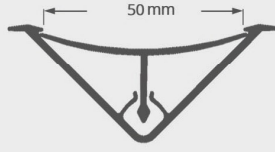
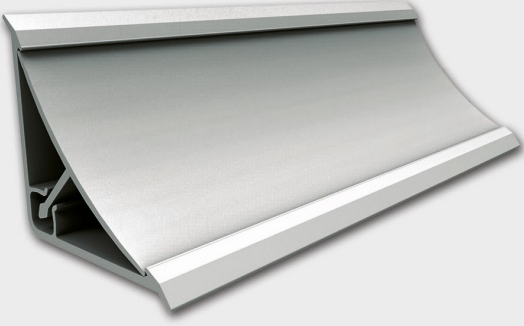


9001



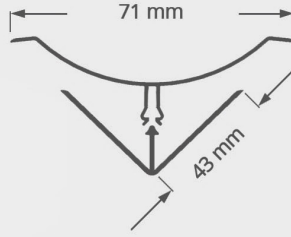
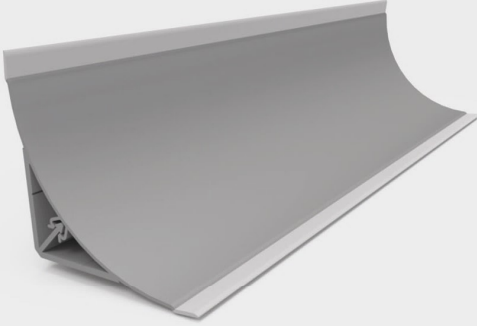
Önden Görünüm





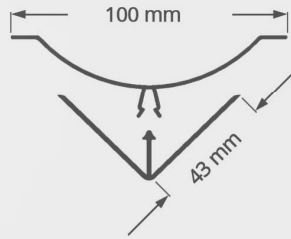
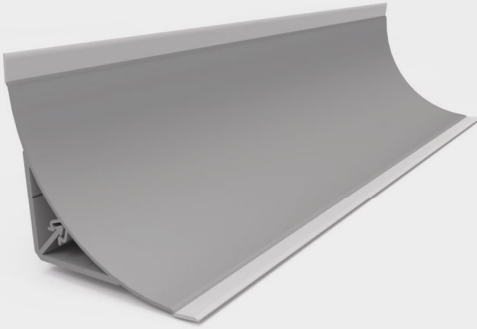
OMG-050

Hijyenik Profil 50 mm
RAL 9002
Boy 5 m



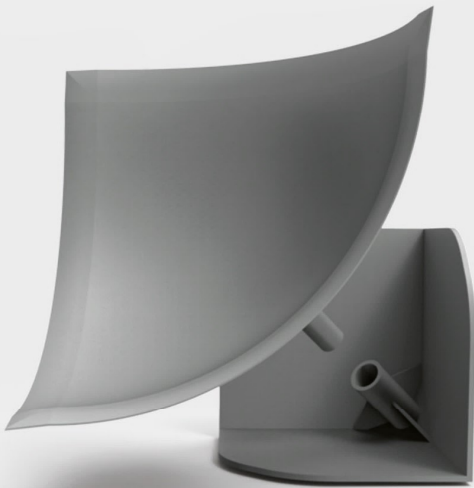
OMG-051

Hijyenik Profil 70 mm
RAL 9002
Boy 5 m

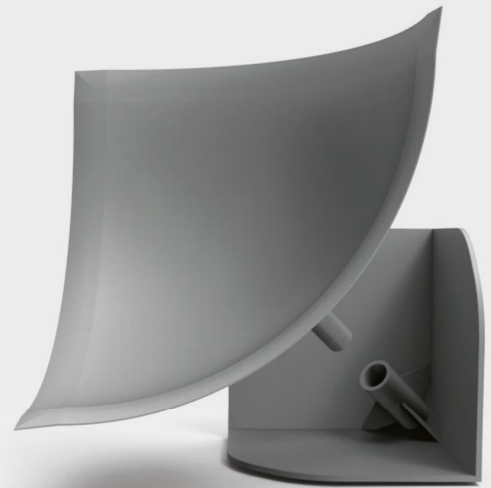


OMG-052

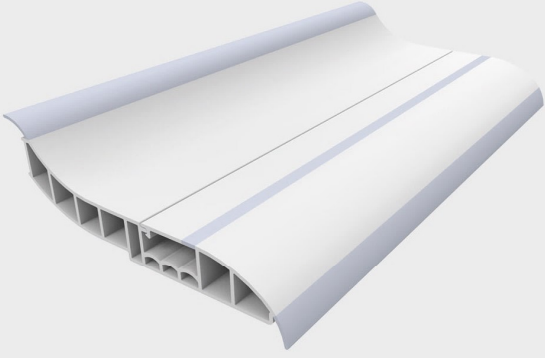
Hijyenik Profil 100 mm
RAL 9002
Boy 5 m



OMG-053 Hijyenik Köşe Birleştirici 100 mm



OMG-054 Hijyenik Köşe Birleştirici 70 mm



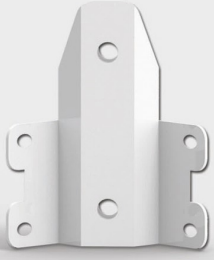
OMG-060 Dip Köşe Profili - 90 mm



OMG-061 Sağ-Sol Yan Kapaklar



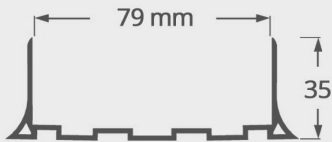
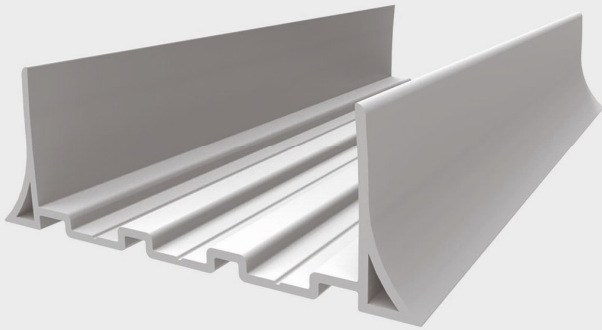
OMG-062 Dış Köşe



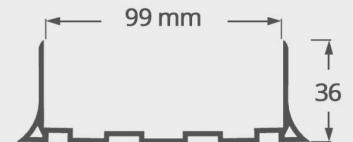
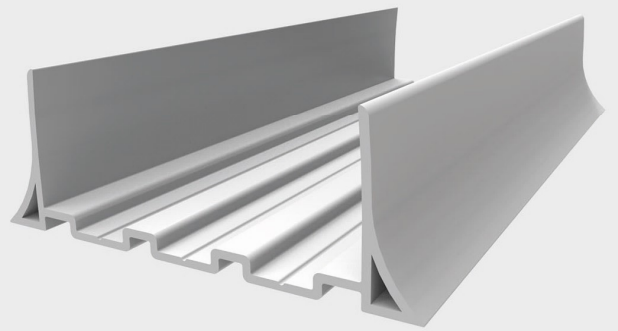
OMG-063 Köşe Bağlantı Aparatı



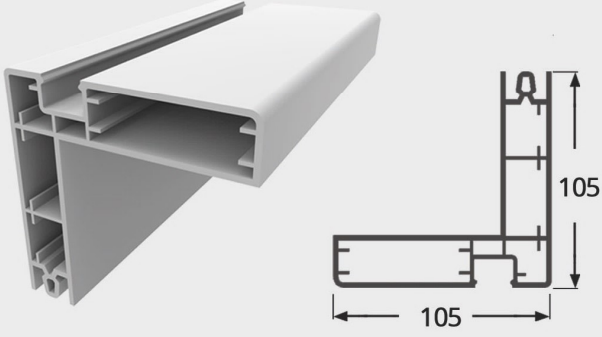
OMG-064 İç Köşe



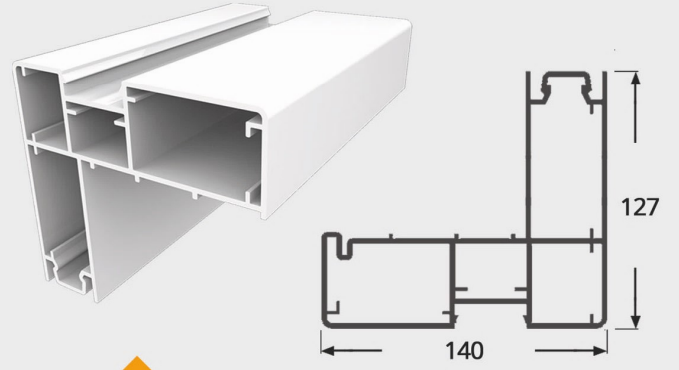
OMG-065 Panel Taban Profili 80'lik



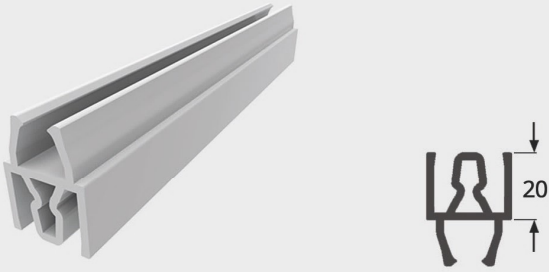
OMG-064 Panel Taban Profili 100 mm



OMG-100 Kasa Ana Profili



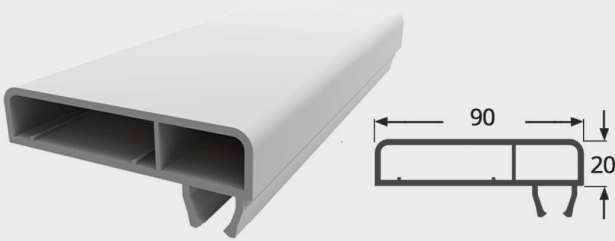
OMG-200 Kasa Ana Profili



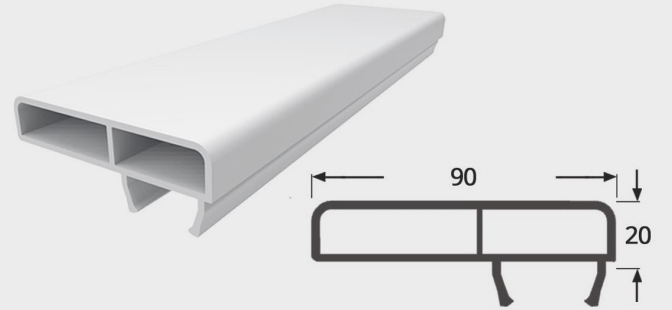
OMG-101 2 Cm Ekleme Profili



OMG-201 2 Cm Ekleme Profili



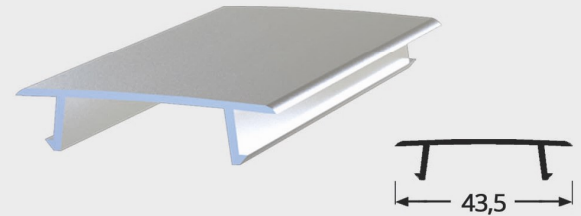
OMG-102 Kasa Pervaz Profili



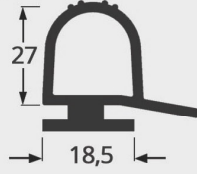
OMG-202 Kasa Pervaz Profili



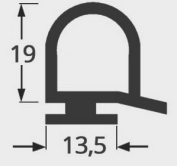
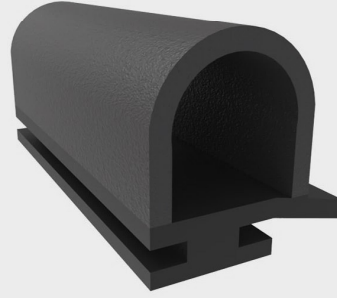
OMG-103 Rezistans Kapak Profili



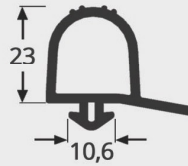
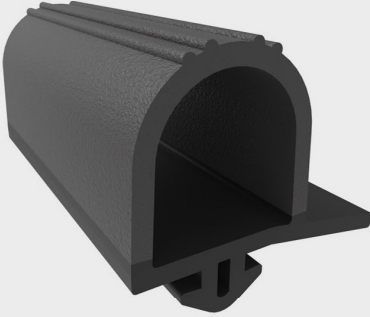
OMG-203 Rezistans Kapak Profili



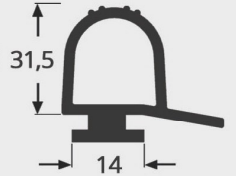
OMG-300 EPDM Conta



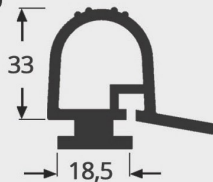
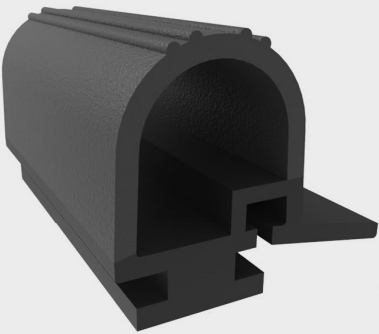
OMG-303 EPDM Conta



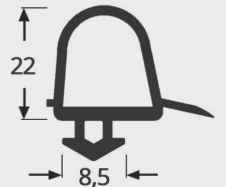
OMG-301 EPDM Conta



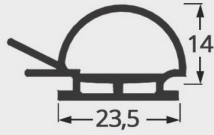
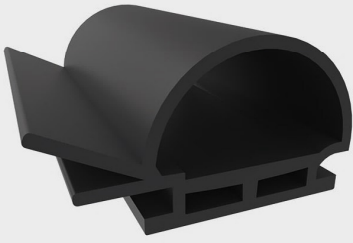
OMG-304 EPDM Conta



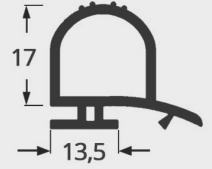
OMG-302 EPDM Conta



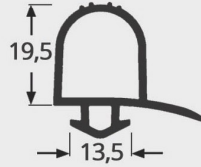
OMG-305 EPDM Conta



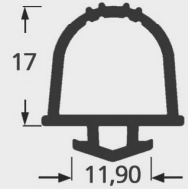
OMG-330 PVC Conta



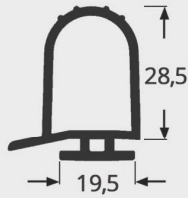
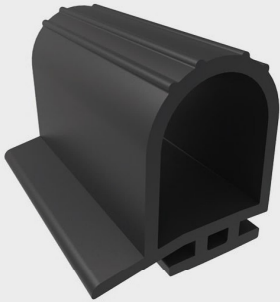
OMG-334 PVC Conta



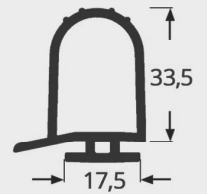
OMG-331 PVC Conta



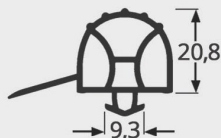
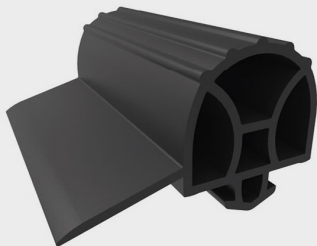
OMG-335 PVC Conta



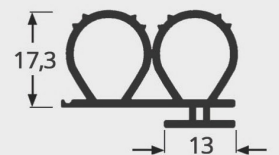
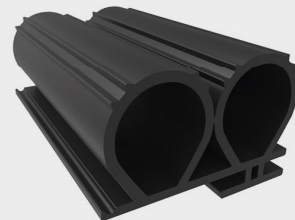
OMG-332 PVC Conta



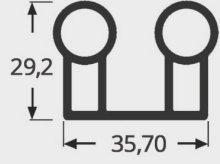
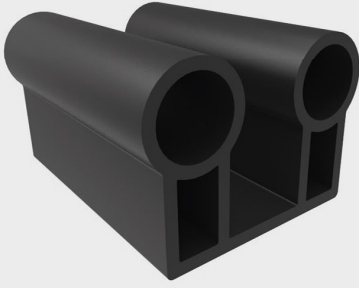
OMG-336 PVC Conta



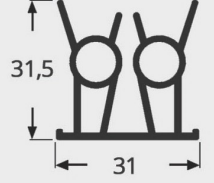
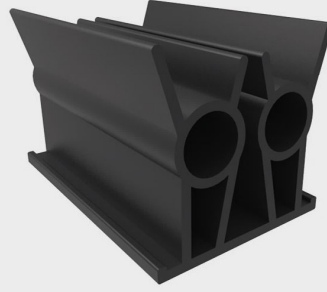
OMG-333 PVC Conta



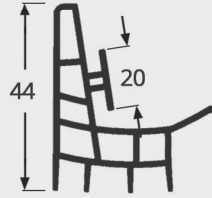
OMG-337 PVC Conta



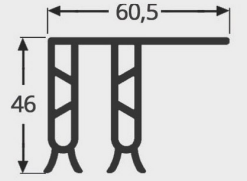
OMG-360 Taban Contası



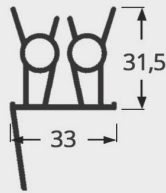
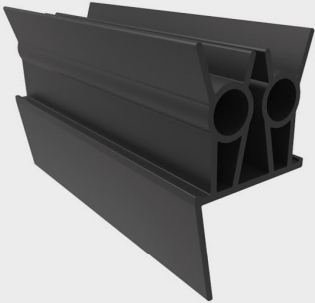
OMG-364 Taban Contası



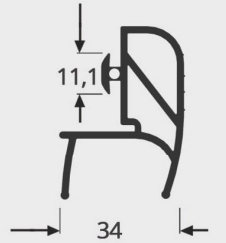
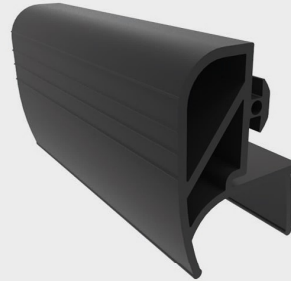
OMG-361 Taban Contası



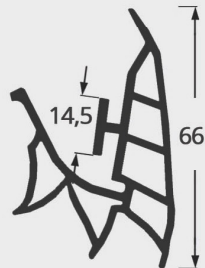
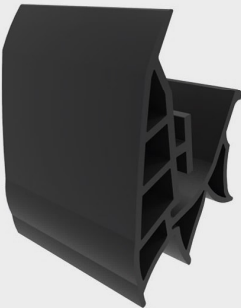
OMG-365 Taban Contası



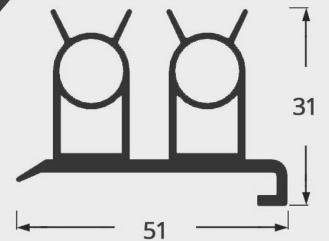
OMG-362 Taban Contası



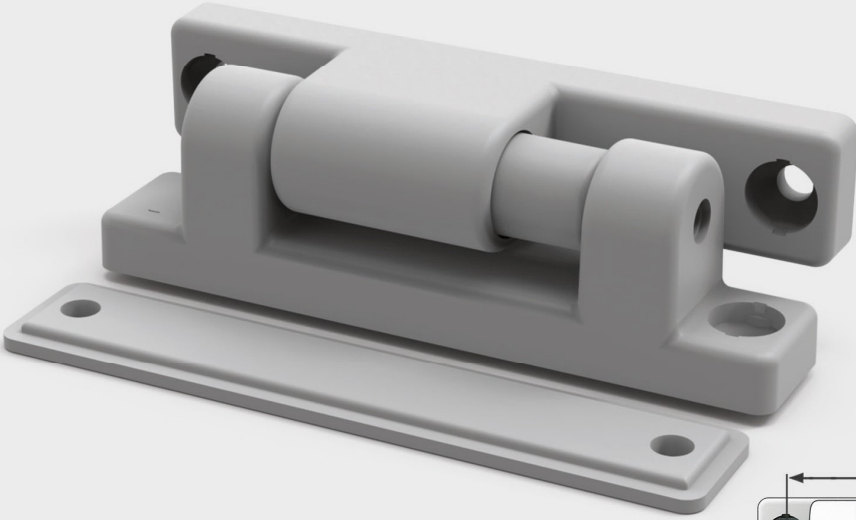
OMG-366 Taban Contası



OMG-363 Taban Contası

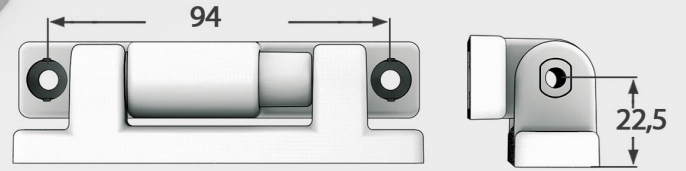


OMG-367 Taban Contası

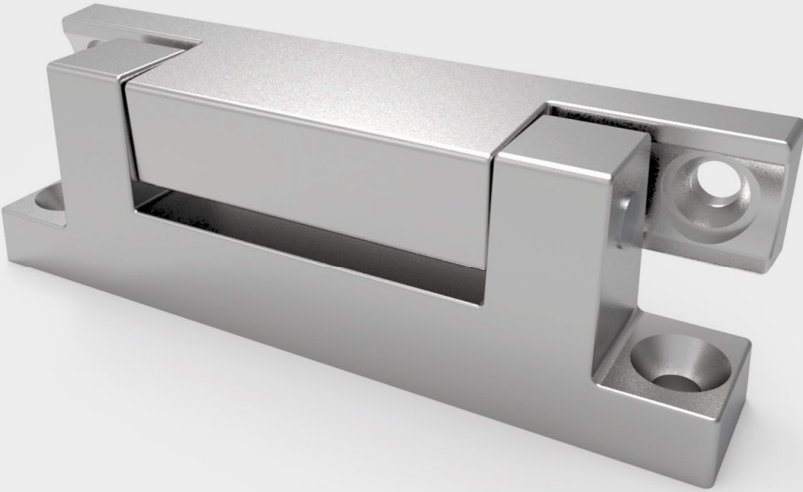


Plastik Yaylı Yan Mentşe

Market Dolaplarının Kapaklarında Kullanılan
Plastik Yaylı Yan Mentşe

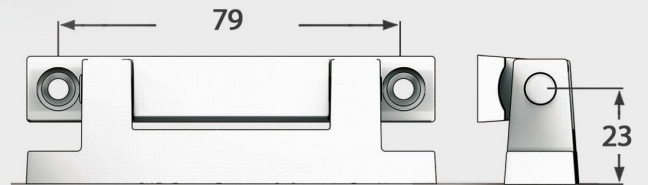


OMG - M3050 Plastik Yaylı Yan Mentşe



Zamak Yan Mentşe

Market Dolaplarının Kapaklarında Kullanılan
Zamak Yan Mentşe

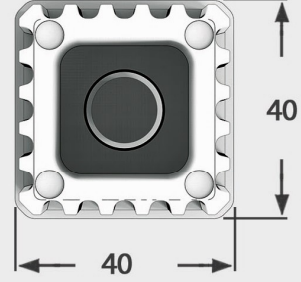


OMG - M3060 Zamak Yan Mentşe



40 x 40 M12 Rotil Ayak

Endüstriyel Mutfak ve Market Dolaplarının Kapaklarında Kullanılan Sabitleme Ayakları



OMG - A5000 40 x 40 M12 Rotil Ayak

Dik Dolaplar İçin Plastik Kol

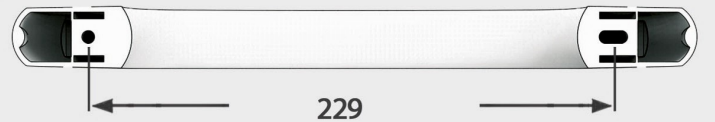
Dik Dolaplarının Kapaklarında Kullanılan Plastik Tutma Kolu



OMG - K5050 Plastik Kol

Dik Dolaplar İçin Plastik Kol

Dik Dolaplarının Kapaklarında Kullanılan Plastik Tutma Kolu



OMG - K5051 Plastik Kol



Adres : İ.O.S.B Sinpaş İş Modern San. Sitesi H Blok -2. Kat No:5-6 BAŞAKŞEHİR / İSTANBUL
Telefon : +90 212 549 71 73
Mobil : +90 532 386 04 31
Mail Adresi : emrah@omgsogutma.com.tr
Web Adresi : www.omgsogutma.com.tr

